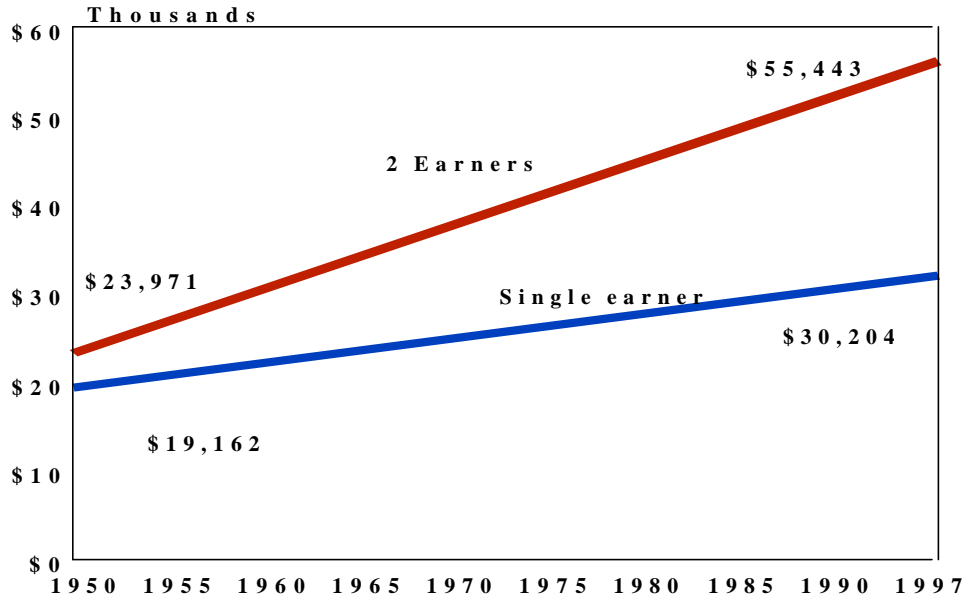
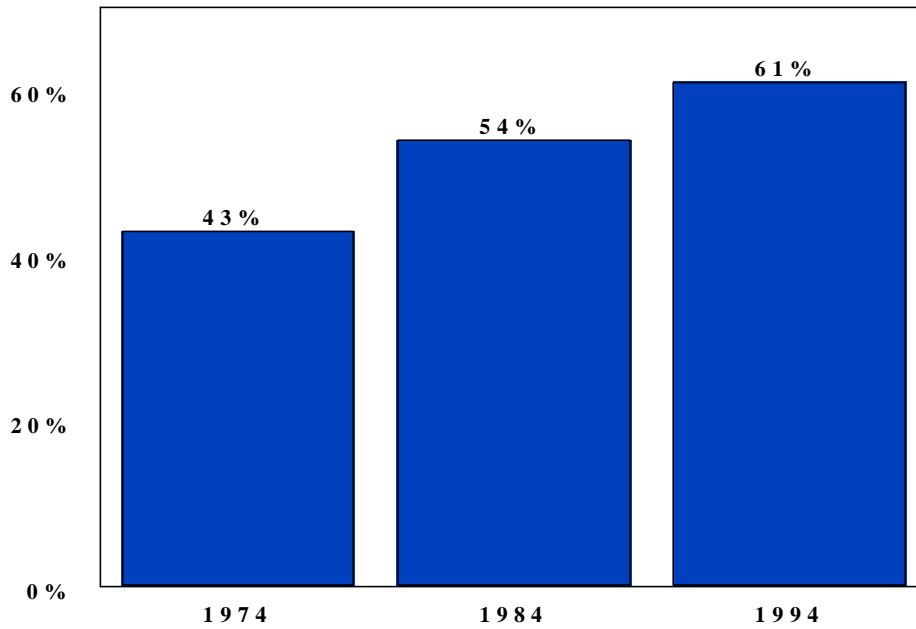


**Median Family Income 1950-1997
(Constant 1997 Dollars)**



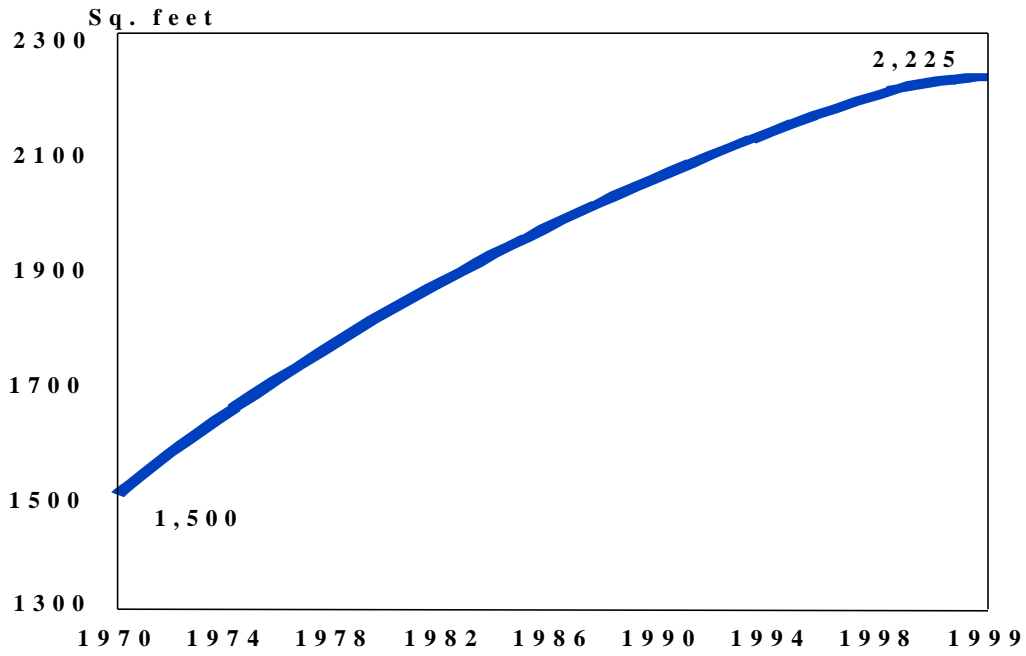
Source: Census Bureau, CPS Reports

Dual Employed Couples



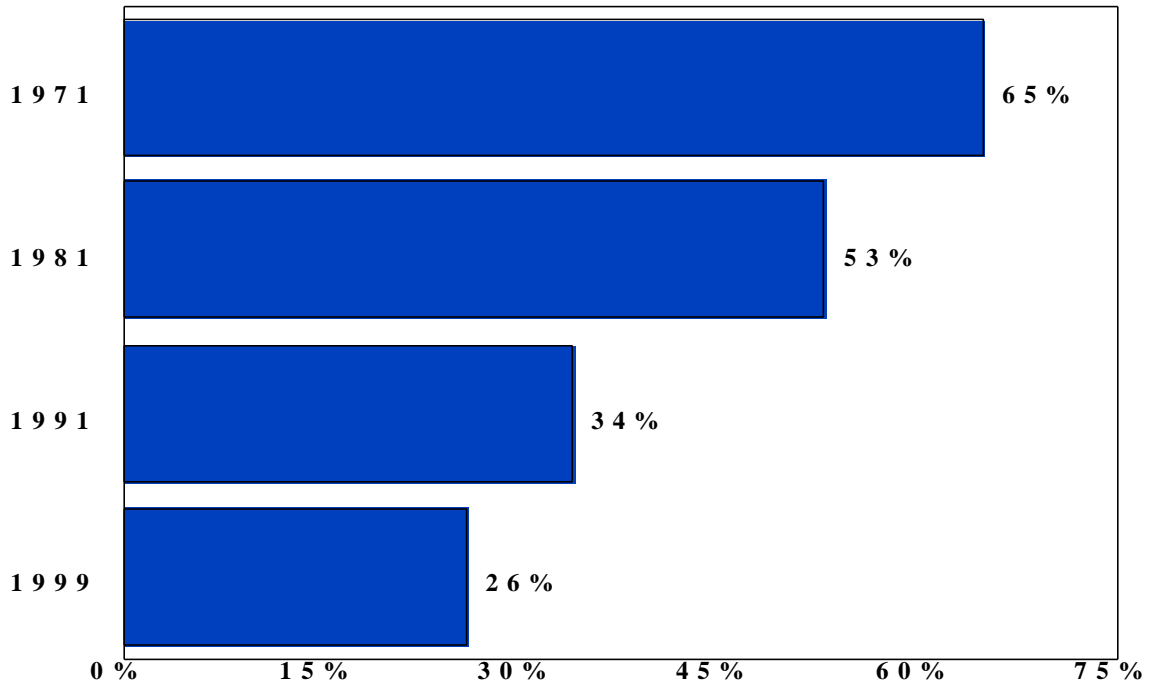
Source: Census Bureau, Current Population Survey

Average Size of New Single Family Homes

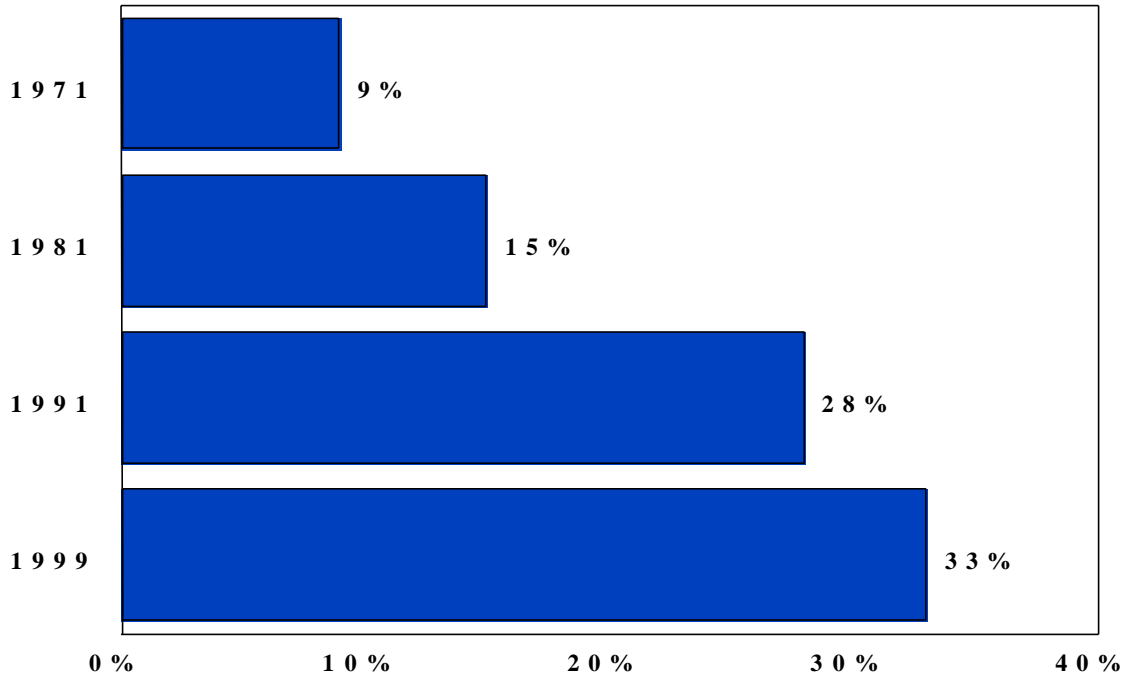


Source: Census Bureau, Characteristics of New Homes Completed

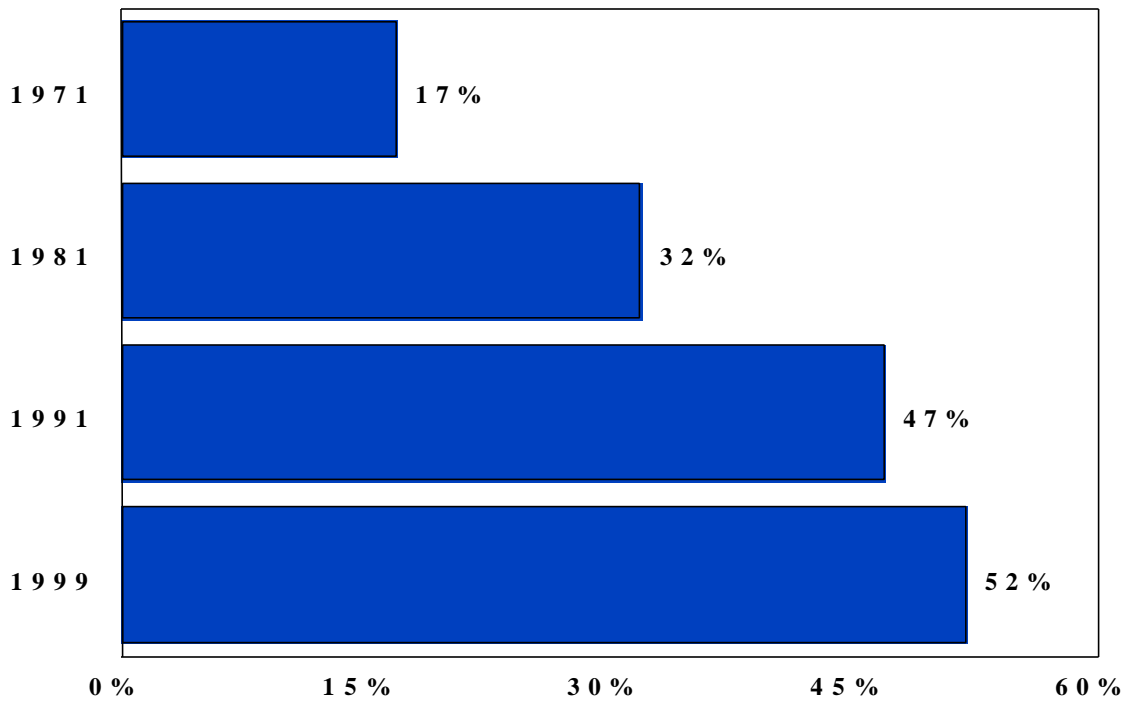
New Homes Completed with 1,600 Square Feet or Less



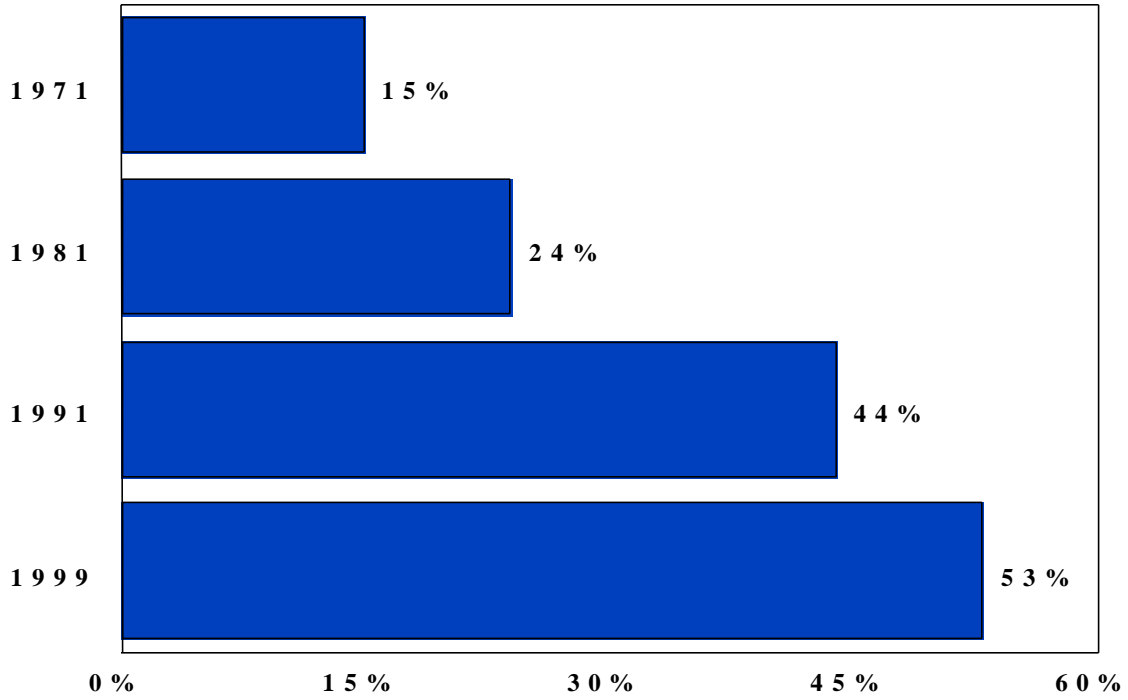
**New Homes Completed
with 2,400 Square Feet or Less**



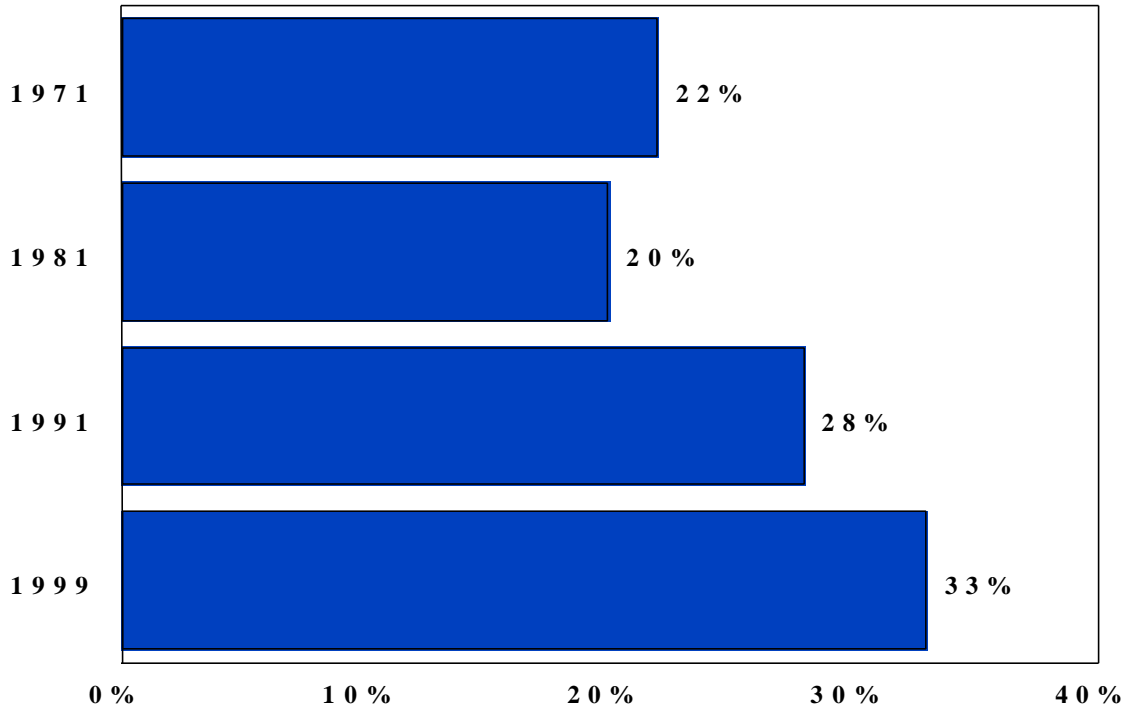
**New Homes Completed
with 2 Stories or More**



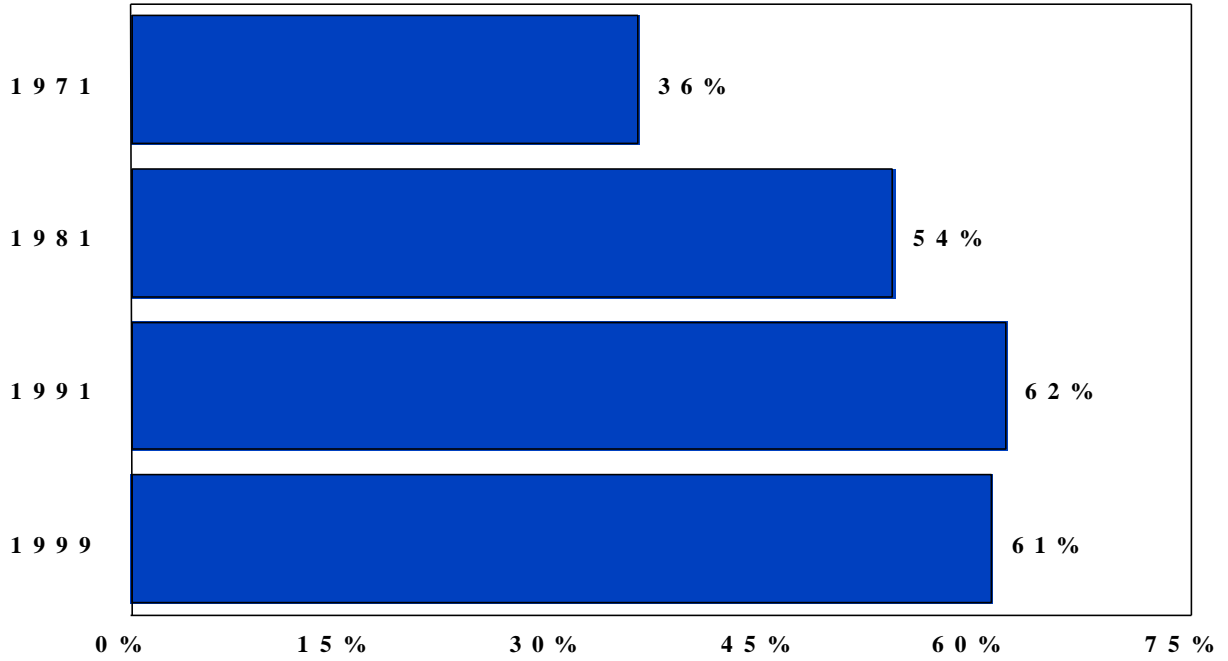
**New Homes Completed
with 2½ or More Bathrooms**



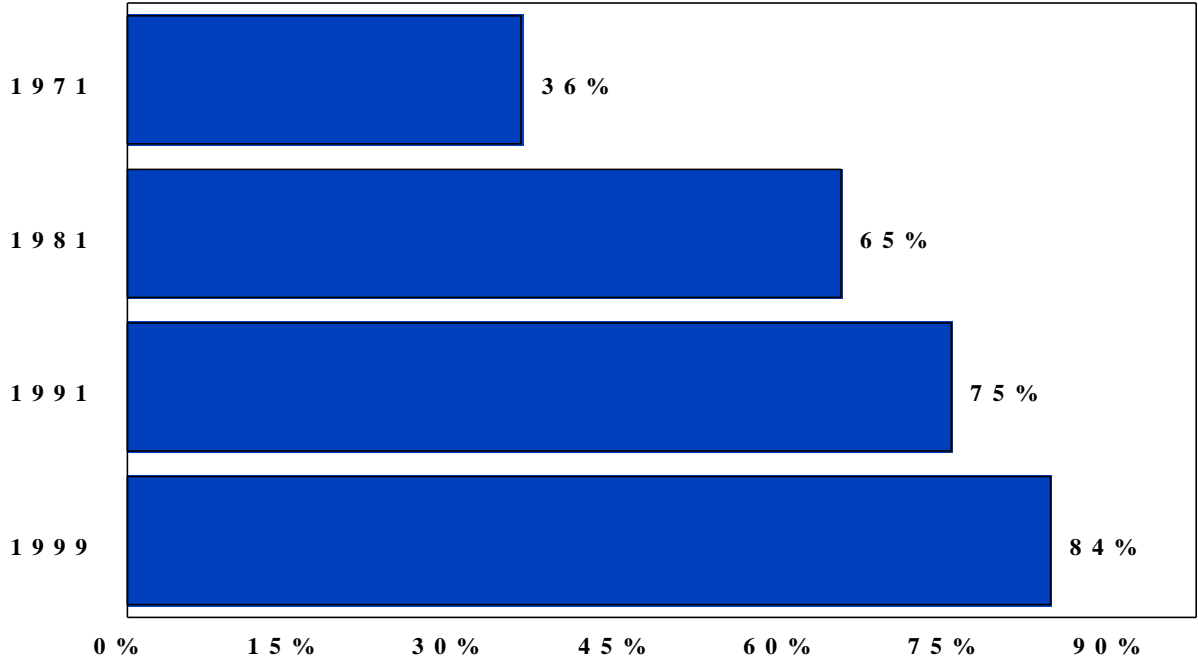
**New Homes Completed
with 4 or More Bedrooms**



**N e w H o m e s C o m p l e t e d
w i t h 1 o r M o r e F i r e p l a c e s**

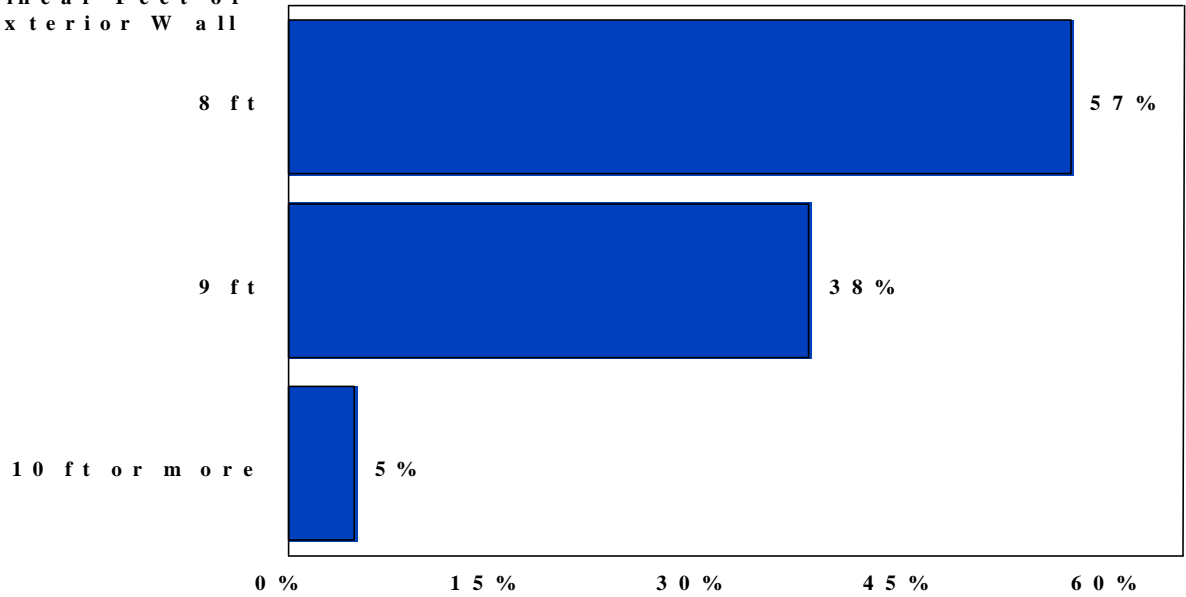


**N e w H o m e s C o m p l e t e d
w i t h C e n t r a l A C**



C e i l i n g H e i g h t F i r s t F l o o r

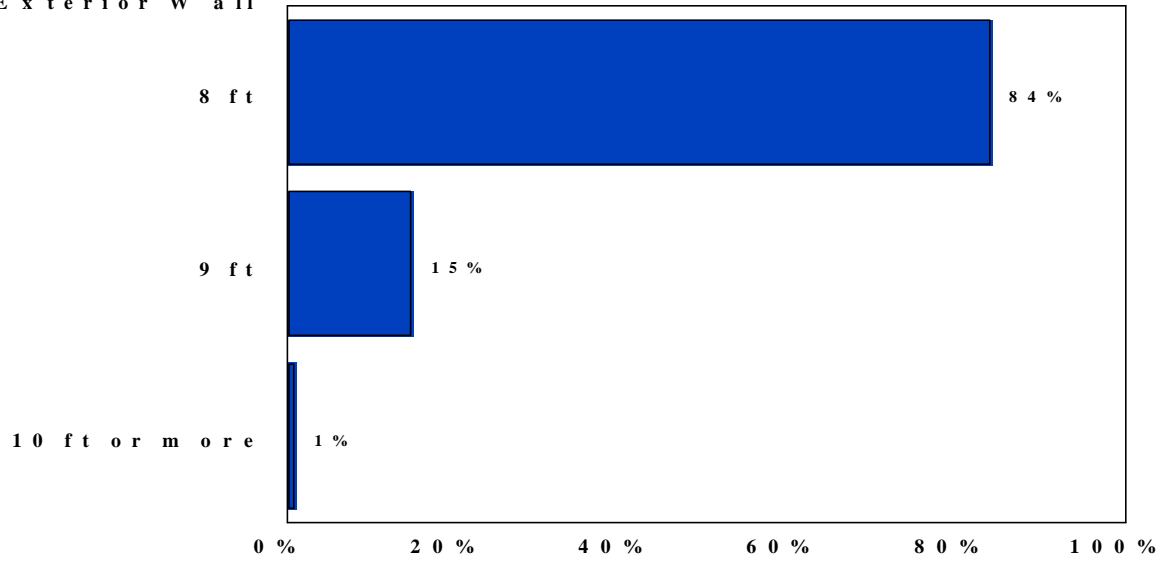
L i n e a r F e e t o f
E x t e r i o r W a l l



S o u r c e : N A H B B E C M o n t h l y S u r v e y

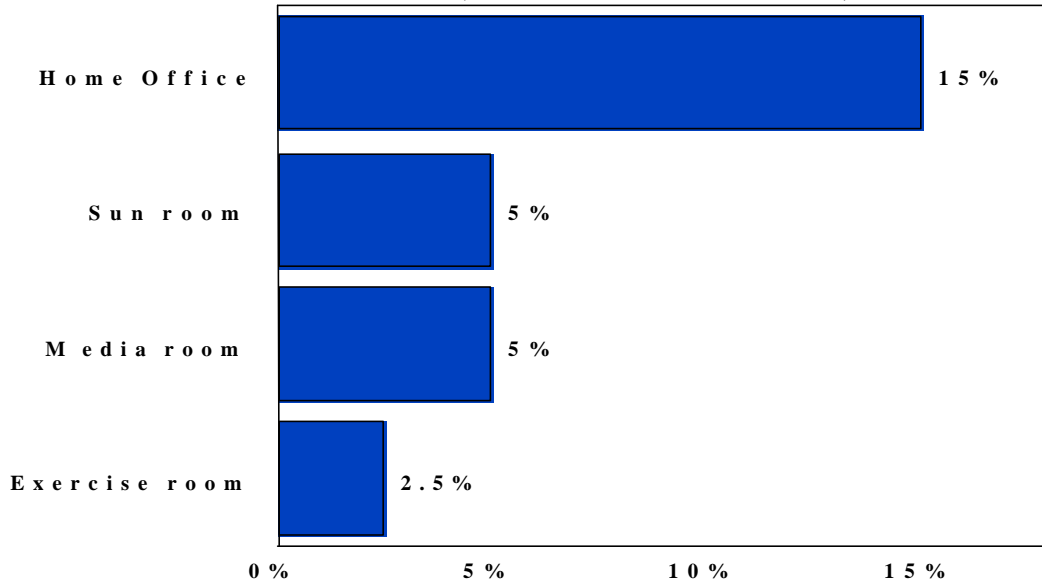
C e i l i n g H e i g h t S e c o n d F l o o r

L i n e a r F e e t o f
E x t e r i o r W a l l



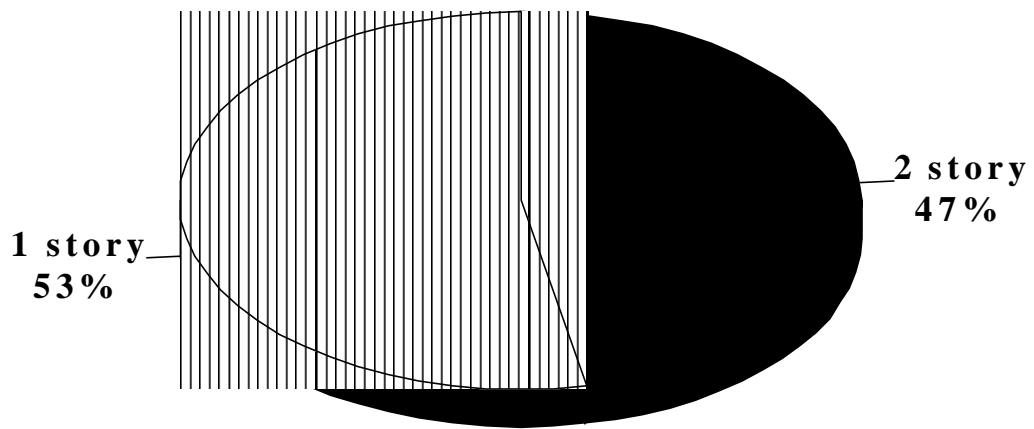
S o u r c e : N A H B B E C M o n t h l y S u r v e y

**Specialty Room - 1998
(Percent of Units)**



Source: 1998 Builder Practices Survey, NAHB Research Center

**Height of Family Room - 1999
(in 2 story homes)**



Source: NAHB BEC Monthly Survey

Other Features in New Homes - 1999

Central Island in the Kitchen	38%
Walk in Pantry	31%
Skylights	11%
No Living Room	17%
Security Systems	36%

Source: NAHB BEC Monthly Survey

New Homes with Outside Features

Deck	27%
Patio	42%
Front Porch	53%
Screened-in Porch	6%
Breezeway	1%

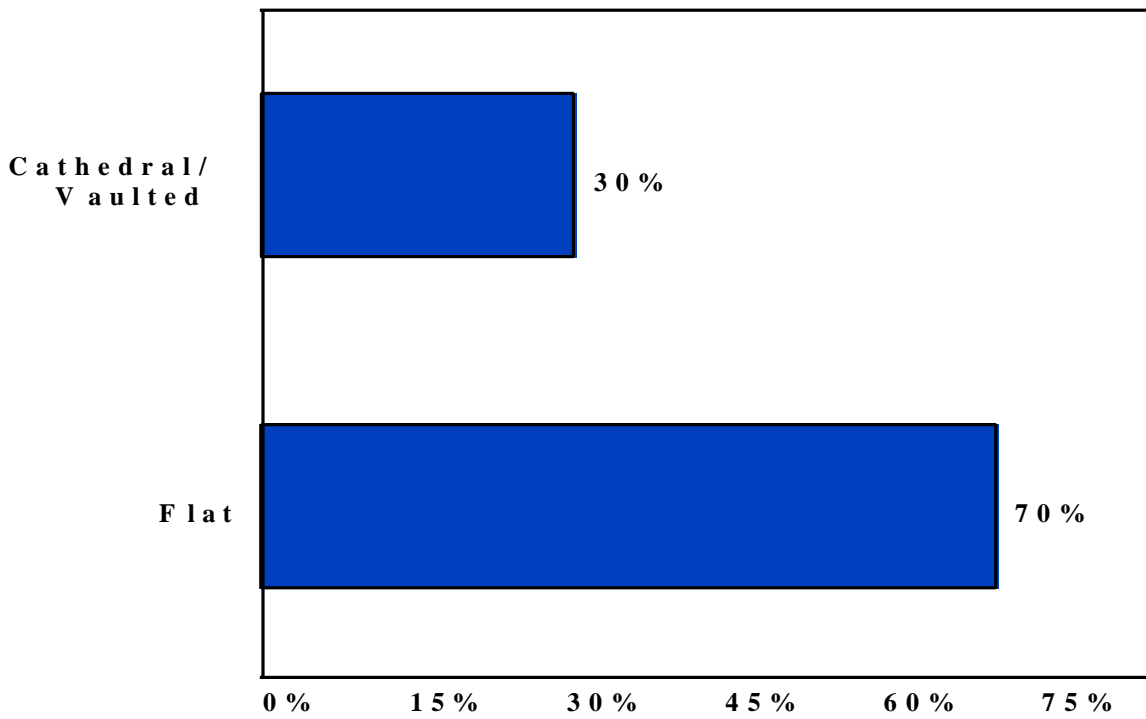
Source: 1998 Builder Practices Survey, NAHB Research Center

Direction of Garage

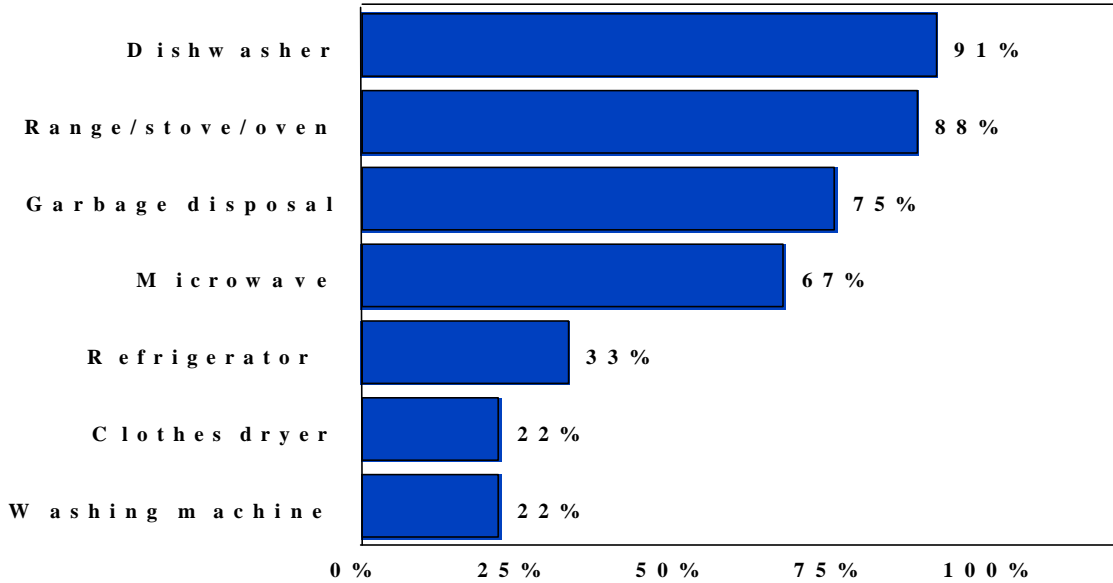
Front Entry	81%
Side Entry	15%
Rear	4%

Source: 1998 Builder Practices Survey, NAHB Research Center

Type of Ceiling Area

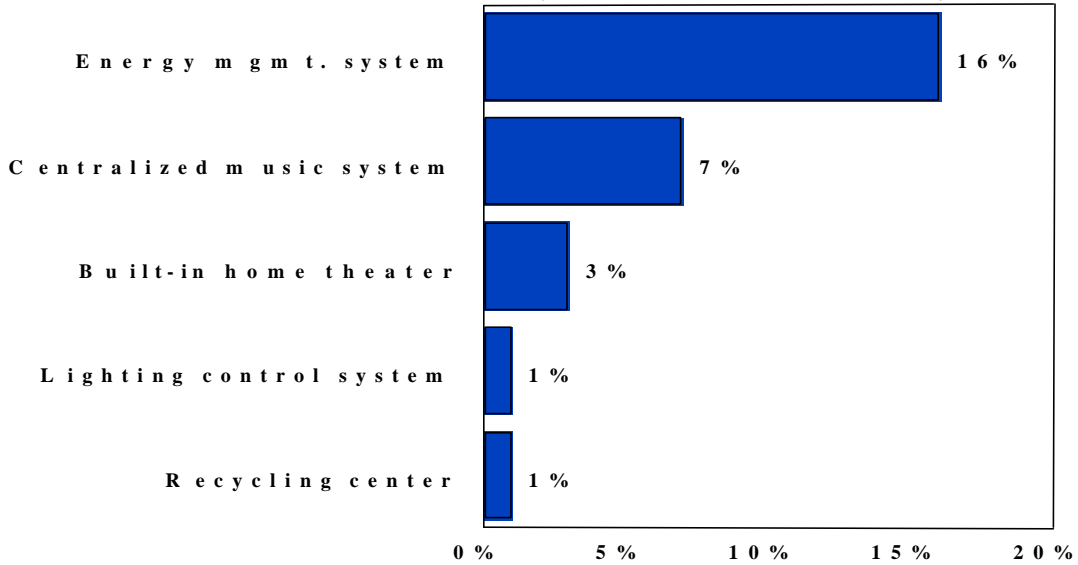


**A p p l i a n c e s
(P e r c e n t o f U n i t s)**



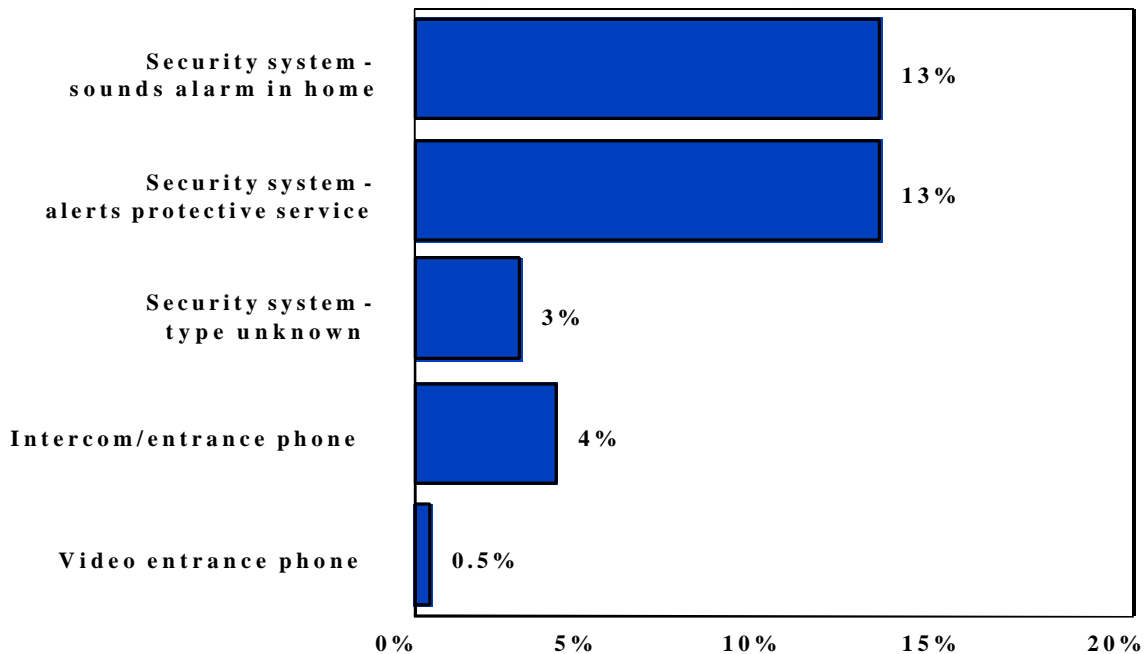
Source: 1998 Builder Practices Survey, NAHB Research Center

**H o m e A u t o m a t i o n S y s t e m s
(P e r c e n t o f U n i t s)**



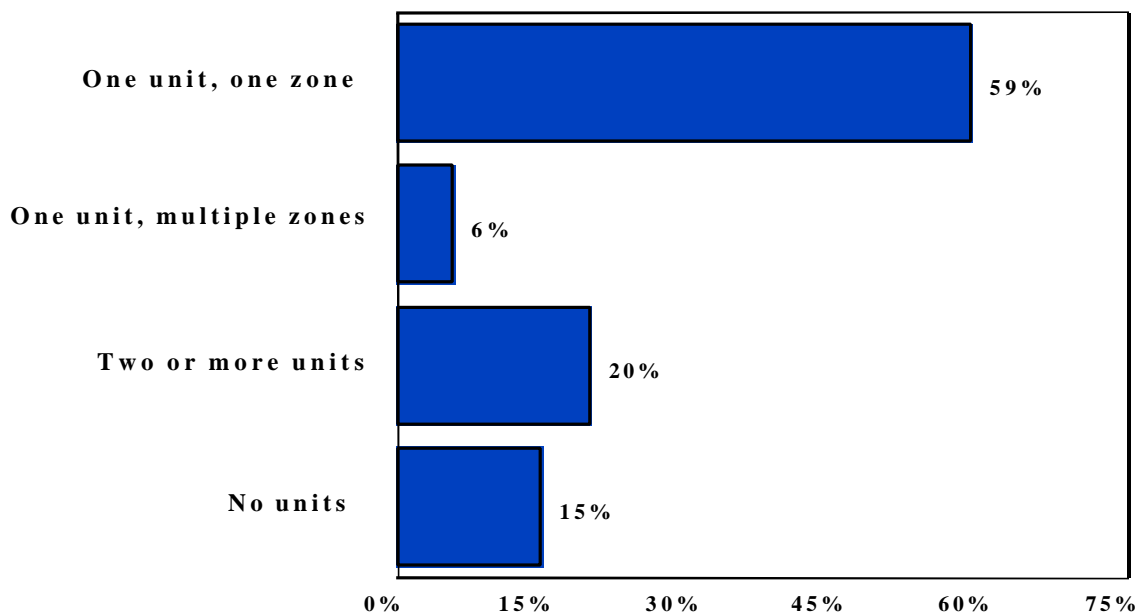
Source: 1998 Builder Practices Survey, NAHB Research Center

Security Systems (Percent of Units)



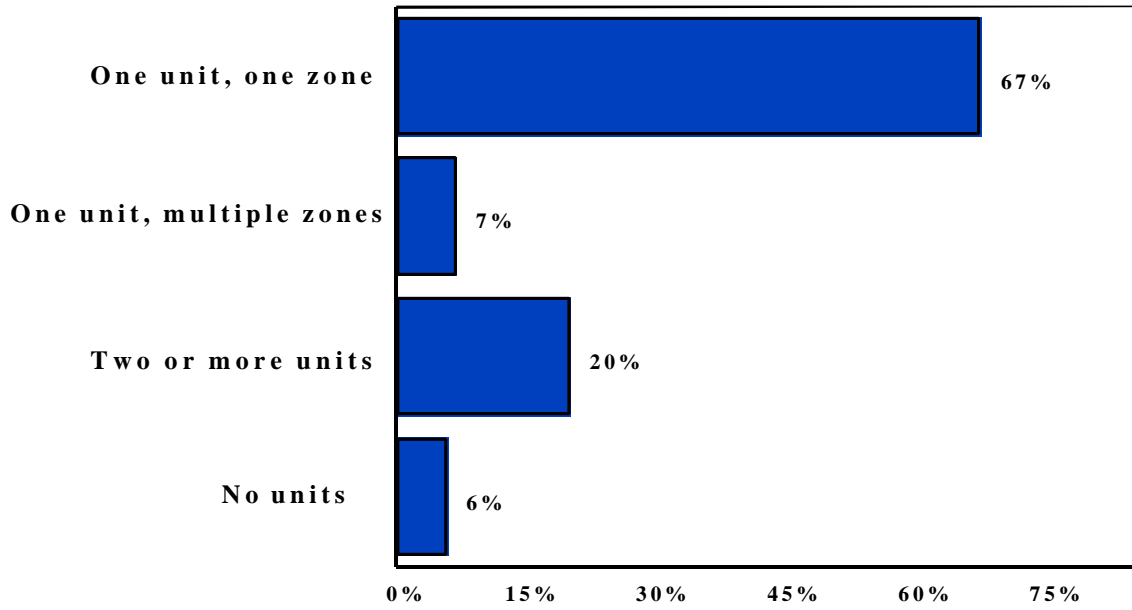
Source: 1998 Builder Practices Survey, NAHB Research Center

Cooling Systems Per House/Zoning (Percent of Units)



Source: 1997 Builder Practices Survey, NAHB Research Center

**Central Heating Systems Per House/Zoning
(Percent of Units)**



Source: 1998 Builder Practices Survey, NAHB Research Center

Home Systems

	Standard	Optional	Total
Integrated Security and Lighting Control	0.8%	4.3%	5.1%
Integrated HVAC and Security Systems	0.3%	2.5%	2.8%
Monitored Burglar Alarm Systems	12.5%	9.9%	22.4%
Monitored Burglar/Fire Toxic Gas Systems	2.7%	5.2%	7.9%

Source: NAHB BEC Survey, December 1998

Multi-room Audio/Video

	Standard	Optional	Total
Multi-room Audio	1.6%	6.7%	8.3%
Multi-room Video Access	1.4%	2.1%	8.4%

Source: NAHB BEC Survey, December 1998